

Light efficiency:

104 Lumen/Watt

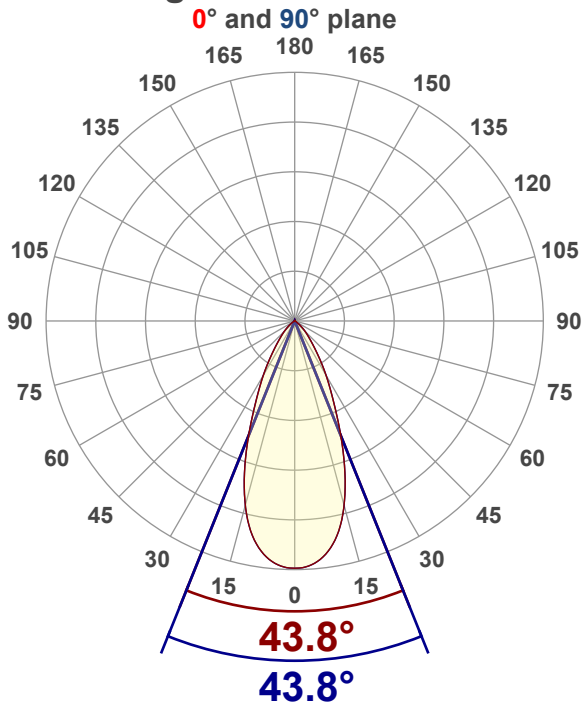
Color temperature:

5169 K

Light quality:

CRI:92.7, R_g:89.5, R_f:100.6**P: 2 / V: - / F: 3****Output: 1230 lm****Peak: 1898 cd****Power: 11.8 W****Voltage: 120 V****Current: 0.102 A****PF: 0.97****THD: 19.46 %**

Angular Distribution



Product name:

RA4-12RG-90WH - 5000K

Test Date:

12/5/2025

Beam Angle (50% of the brightness of the centre):

43.8°

Field Angle (10% of the brightness of the centre):

78.9°

Cut Off Angle (2.5% of the brightness of the centre):

104°

Beam Details

*measured at centre of beam

Mounting Height (feet)\(meter)	Lux*	Footcandles*	Beam width (feet) / (meter)
4 ft / 1.2 m	1277 lx	119 fc	3.2 ft / 1 m
8 ft / 2.4 m	319 lx	30 fc	6.4 ft / 2 m
12 ft / 3.7 m	142 lx	13 fc	9.7 ft / 2.9 m
16 ft / 4.9 m	80 lx	7 fc	12.9 ft / 3.9 m
20 ft / 6.1 m	51 lx	5 fc	16.1 ft / 4.9 m

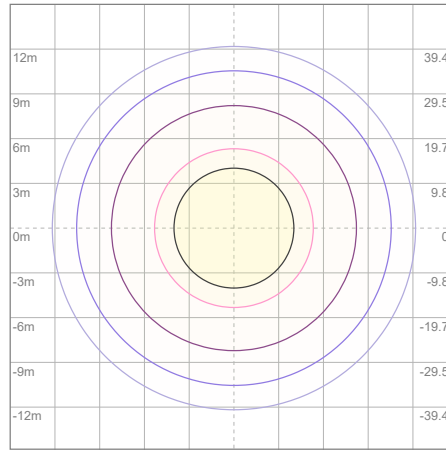
Beam center

Photometric Testing Report

Zonal Lumen Summary

Zone	Lumen	%Luminaire
0-30	913	74.23%
0-40	1102	89.59%
0-60	1217	98.94%
60-90	12.5	1.02%
70-100	3.87	0.31%
90-120	0.068	0.01%
0-90	1229	99.92%
90-180	0.547	0.04%
0-180	1230	100.00%

ISO Lux Diagram



Lux at center:	204 lx
3%	6.12 lx
5%	10.20 lx
10%	20.40 lx
30%	61.20 lx
50%	102.00 lx

Conditions:

Number of planes: 8
Lux distribution on a surface when lamp is mounted at 3.05 meters from the surface.

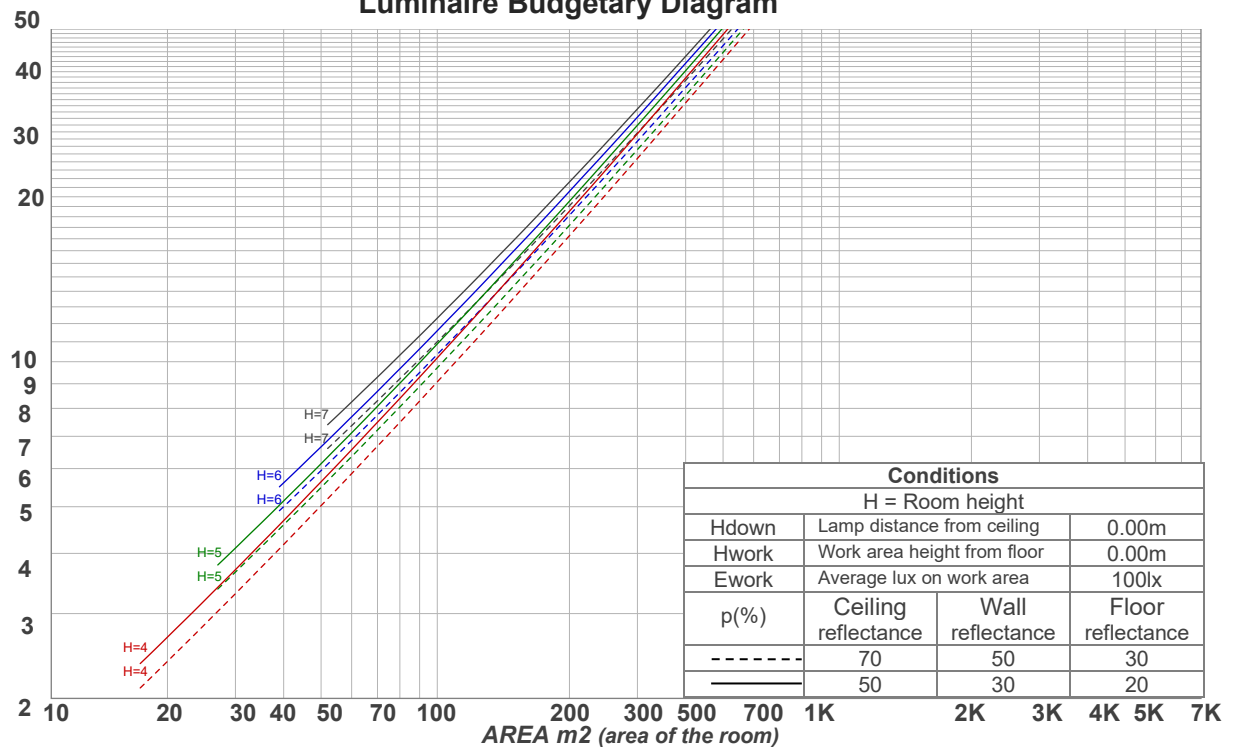
Mounting height: 3.05 meters (10 feet)

Coefficients of Utilization

Ceiling reflectance	80				70				50			30			10			0
Wall reflectance	70	50	30	10	70	50	30	10	50	30	10	50	30	10	50	30	10	0
Floor reflectance	20	20	20	20	20	20	20	20	20	20	20	20	20	20	20	20	20	0
RCR	(RCR: Room Cavity Ratio) Room Values are expressed as percentage of Lumens delivered to the task surface																	
0	119	119	119	119	116	116	116	116	111	111	111	106	106	106	102	102	102	100
1	114	111	108	106	111	109	107	105	105	103	101	101	100	98	98	96	95	94
2	108	103	99	96	106	102	98	95	98	95	93	95	93	91	93	91	89	87
3	103	97	92	88	101	95	91	87	93	89	86	90	87	84	88	85	83	82
4	98	91	85	81	96	89	84	81	87	83	80	85	82	79	83	80	78	76
5	93	85	80	75	92	84	79	75	82	78	74	81	77	74	79	76	73	72
6	89	80	75	70	87	79	74	70	78	73	70	77	72	69	75	72	69	67
7	85	76	70	66	83	75	70	66	74	69	65	73	68	65	72	68	65	63
8	81	72	66	62	80	71	66	62	70	65	62	69	65	61	68	64	61	60
9	77	68	63	59	76	68	62	59	67	62	58	66	61	58	65	61	58	57
10	74	65	59	56	73	64	59	56	64	59	55	63	58	55	62	58	55	54

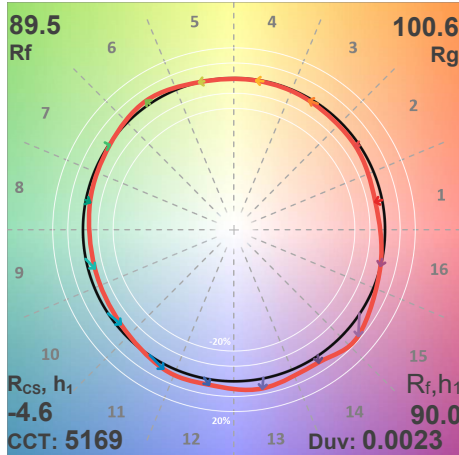
LAMPS (number of lamps)

Luminaire Budgetary Diagram

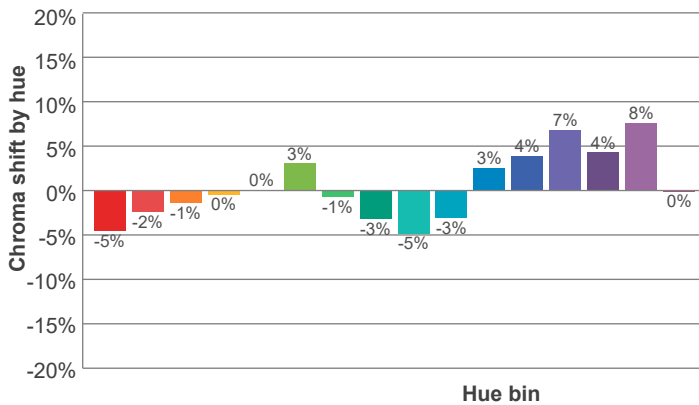
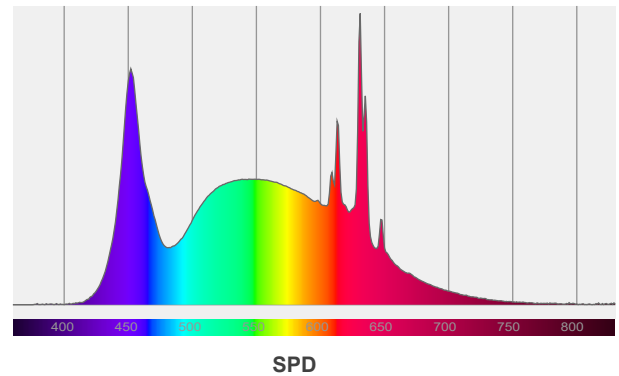
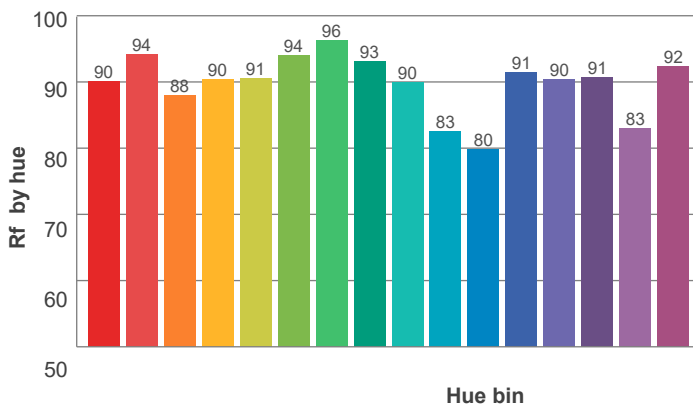
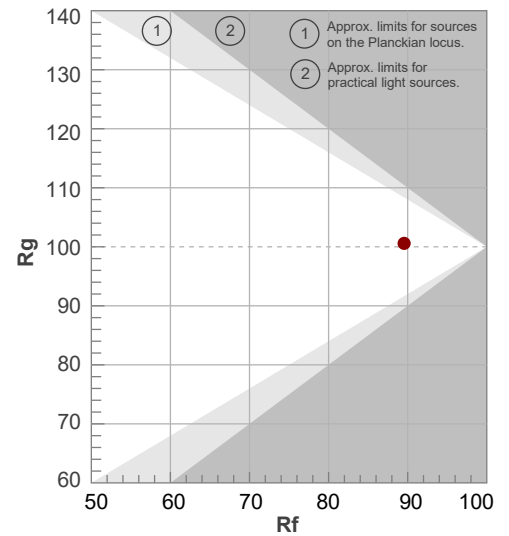


ANSI/IES TM-30-18

P: 2 / V: - / F: 3



Hue Bin	R _f	Shifts (%)	
		Chroma	Hue
1	90	-5%	0%
2	94	-2%	2%
3	88	-1%	6%
4	90	0%	5%
5	91	0%	3%
6	94	3%	1%
7	96	-1%	-1%
8	93	-3%	1%
9	90	-5%	7%
10	83	-3%	10%
11	80	3%	12%
12	91	4%	4%
13	90	7%	-2%
14	91	4%	-2%
15	83	8%	-13%
16	92	0%	-5%



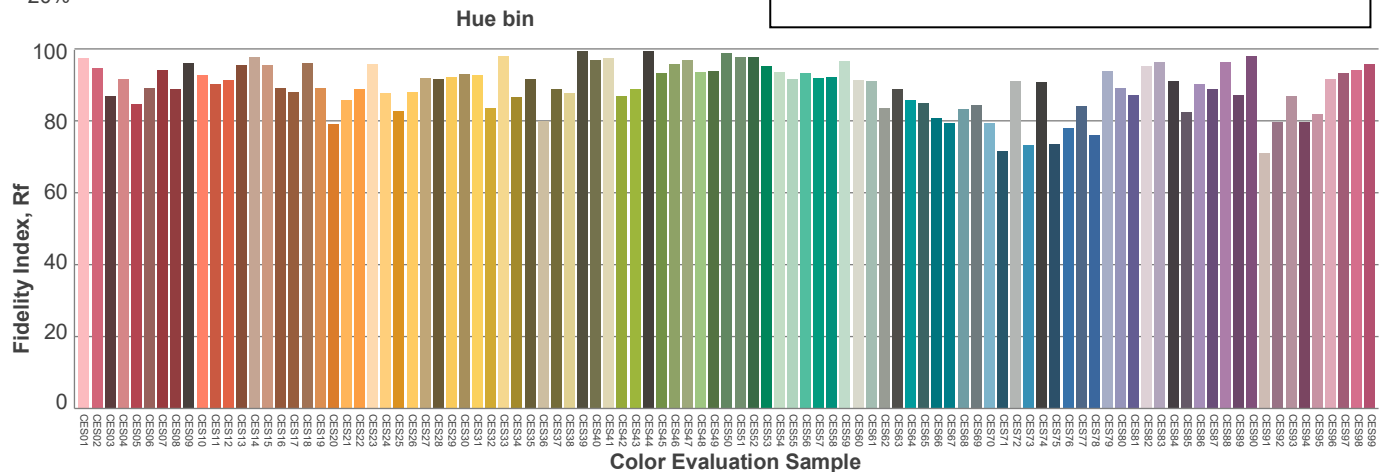
Red: 19.9%, Power=3.4mW

Blue: 18.6%, Power=13.1mW

Green: 32.7%, Power=18.4mW

UVA: 0%, Power=0.0mW

Dominant Wavelength: 581nm

1st Peak Wavelength: 631nm2nd Peak Wavelength: 452nm

Glare Evaluation According to UGR

p Ceiling		70	70	50	50	30	70	70	50	50	30
p Walls		50	30	50	30	30	50	30	50	30	30
p Floor		20	20	20	20	20	20	20	20	20	20
Room size X Y		Viewing direction at right angles to lamp axis					Viewing direction parallel to lamp axis				
2H	2H	20.3	21.0	20.4	21.2	21.4	20.3	21.0	20.4	21.2	21.4
	3H	20.1	20.9	20.5	21.1	21.2	20.1	20.9	20.5	21.1	21.2
	4H	20.1	20.8	20.5	21.0	21.2	20.1	20.8	20.5	21.0	21.2
	6H	20.1	20.7	20.4	21.0	21.3	20.1	20.7	20.4	21.0	21.3
	8H	20.0	20.6	20.3	20.9	21.3	20.0	20.6	20.3	20.9	21.3
	12H	20.0	20.5	20.3	20.9	21.3	20.0	20.5	20.3	20.9	21.3
4H	2H	20.0	20.8	20.4	21.0	21.2	20.0	20.8	20.4	21.0	21.2
	3H	20.0	20.6	20.4	20.9	21.4	20.0	20.6	20.4	20.9	21.4
	4H	19.9	20.4	20.3	20.9	21.4	19.9	20.4	20.3	20.9	21.4
	6H	19.9	20.4	20.4	20.7	21.1	19.9	20.4	20.4	20.7	21.1
	8H	19.8	20.3	20.3	20.7	21.0	19.8	20.3	20.3	20.7	21.0
	12H	19.8	20.2	20.3	20.6	21.0	19.8	20.2	20.3	20.6	21.0
8H	4H	19.8	20.3	20.3	20.7	21.0	19.8	20.3	20.3	20.7	21.0
	6H	19.8	20.1	20.3	20.6	21.1	19.8	20.1	20.3	20.6	21.1
	8H	19.8	20.0	20.3	20.6	21.2	19.8	20.0	20.3	20.6	21.2
	12H	19.7	19.9	20.3	20.4	21.0	19.7	19.9	20.3	20.4	21.0
12H	4H	19.7	20.1	20.2	20.5	21.0	19.7	20.1	20.2	20.5	21.0
	6H	19.8	20.0	20.3	20.6	21.2	19.8	20.0	20.3	20.6	21.2
	8H	19.7	19.9	20.3	20.4	21.0	19.7	19.9	20.3	20.4	21.0
Variation of the observer position for the luminaire distance S											
S = 1.0H		3.4 / -5.5					3.4 / -5.5				
S = 1.5H		5.8 / -7.8					5.8 / -7.8				
S = 2.0H		7.6 / -8.8					7.6 / -8.8				
Standard table		n/a					n/a				
Correction summand		n/a					n/a				
Corrected glare indices referring to 1230 lm total luminous flux											